

TerraTec



For Desktop + Mobile Computing

Manual (English)

CE Declaration

We:

TerraTec Electronic GmbH, Herrenpfad 38, D-41334 Nettetal, Germany

hereby declare that the product:

TerraCAM USB Pro

to which this declaration refers complies with the following standards or standardizing documents:

1. EN 55022
2. EN 50082-1

The following are the stipulated operating and environmental conditions for the said compliance:

Residential, business and commercial environments and small-company environments.

This declaration is based on:

test report (s) of the EMC testing laboratory

TerraTec® ProMedia, SoundSystem Gold, SoundSystem Maestro, SoundSystem Base1, AudioSystem EWS®64, AudioSystem EWS88 MT, XLeRate, XLeRate Pro, Base2PCI, TerraTec 128iPCI, TerraTV+, TerraTV Radio+, TerraTValue, WaveSystem, TerraCAM USB, MIDI Smart and MIDI Master Pro are trademarks registered by TerraTec® Electronic GmbH Nettetal.

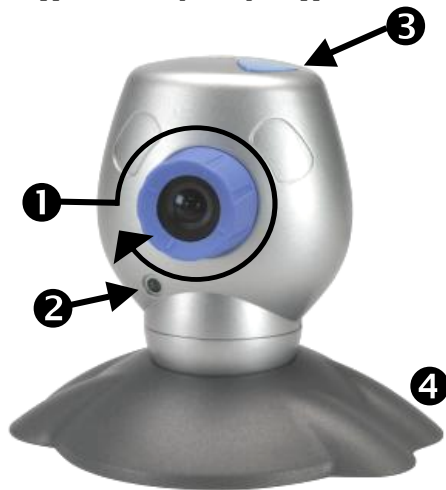
In most cases, the designations used in this manual for software and hardware are also registered trademarks and are thus subject to the relevant regulations.

©TerraTec® Electronic GmbH, 1994-2000. All rights reserved (16.06.00).

Meticulous care has been exercised in the preparation of all text passages and illustrations in this manual. TerraTec Electronic GmbH and its authors, however, accept no liability, legal or otherwise, for errors or the consequences of such errors. We reserve the right to technical modifications.

All text passages in this documentation are copyrighted. All rights reserved. No part of this documentation may be reproduced in any form whatsoever, by photography, microfilming or other process or rendered into a language/form usable by computers without the prior, written consent of the authors. All rights for use and propagation by presentation, radio and television are also reserved.

HARDWARE OVERVIEW



- ❶ Focusing
- ❷ Operating light



- ❸ Snapshot button
- ❹ Camera base
- ❺ Clip

KEY FEATURES

- Real VGA resolution 640 x 480
- Snapshot button for recording single frames
- Record single frames and video clips
- Send pictures and videos per email
- Ideal for video conferencing
- Room surveillance software
- Can be used as a WebCam
- Includes clip, e.g. for notebooks

SYSTEM REQUIREMENTS

- 1 free USB port
- Pentium 200 MHz
- 32 MB RAM
- CD-ROM drive (to install the drivers and software)
- Windows 98 (SE recommended) or Windows 2000

PACKAGE CONTENTS

- TerraCAM USB with base and clip holder
- TerraCAM USB CD-ROM with drivers, SupervisionCAM, Photo Express, Video-Live Mail, Microsoft NetMeeting and Acrobat Reader
- This quick-reference guide
- Registration card

TECHNICAL DATA

- 1/3" Color sensor
- Manual focusing
- Focal range from 10 cm to infinity
- Resolution up to 640 x 480 pixels (VGA)
- Snapshot button for recording single frames
- Up to 30 frames/second (QSIF), 25-30 frames/second (SIF)
- Up to 24-bit color depth
- Automatic aperture
- Hardware compression (4:1, 6:1, 8:1)
- 1.5 m cable
- 12-month guarantee

INSTALLING THE DRIVERS UNDER WINDOWS 98 / 2000

Naturally you'd like to plug in your new TerraCAM and get started right away, but first please read the following installation information carefully to ensure that everything goes smoothly.

In some cases Windows may ask you to insert the Windows installation CD during the installation. Please have this CD ready.

1. Insert the provided installation CD into your CD-ROM drive.
2. Connect the TerraCAM USB Pro to a free USB port on your computer.
3. Windows detects the new hardware and tells you to install the drivers.
4. Select your CD-ROM drive as the source for the driver installation.
5. Follow the instructions which will then be displayed.

After the installation the TerraCAM USB Pro is then ready for use in all supported applications.

INSTALLING THE SOFTWARE.

1. Insert the provided installation CD into your CD-ROM drive. The TerraCAM USB autostarter starts automatically after a short time. If the autostarter does not start automatically, run the **AutoRun** file manually from the main directory of the CD.
2. Select the language to be used for the installation.
3. Click on the relevant button to install the appropriate software title.
4. Follow the installation instructions which will then be displayed.

DEINSTALLING THE DRIVERS

The drivers can be comfortably deinstalled by clicking on the icon in the program group.

1. Click on the **Start** button.
2. Open the program group **Programs/TerraTec/TerraCAM USB Pro.**



3. Choose **Uninstall TerraCAM USB Pro.**

DEINSTALLING THE SOFTWARE

1. Click on the **Start** button.
2. Select **Settings/Control Panel.**
3. Double-click on the **Add/Remove Programs** icon.
4. Mark the software title you want to deinstall and click on **Add/Remove** to start the deinstall program.

TERRACAM USB PRO DRIVER SETTINGS.

The TerraCAM USB Pro supports two different driver models:

1. Windows Driver Model (WDM), which is used for playing back and recording video sequences.
2. TWAIN. This interface was originally designed for use with scanners, and is used to record single frames with your TerraCAM.

You can still work with the TerraCAM USB Pro even if your video application is based on the older VFW driver model (Video for Windows). Here a so-called wrapper is activated between the driver and the device, ensuring that your TerraCAM USB Pro also functions in these applications.

DRIVER SETTINGS.

Capture Filter

Brightness

This is the brightness compensation and is set automatically. Normally it should not be necessary to adjust this setting.

Contrast

Used to adjust the contrast of the video picture.

Hue

Used to define the hue of the video picture.

Saturation

Used to adjust the color saturation of the picture.

Sharpness

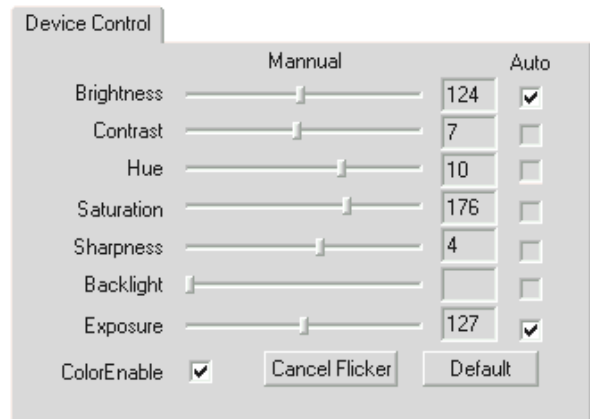
Used to adjust the sharpness of the video picture.

Exposure

Used to set the exposure. This function is automated as a default setting and should not normally need to be adjusted.

ColorEnable

With this function you can set your TerraCAM to black/white or color mode. If the box is activated (shown by the check mark) the TerraCAM is in color mode.



Cancel Flicker

Here you can activate the banding filter, which eliminates undesirable stroboscopic effects that may occur under artificial lighting conditions.

Default

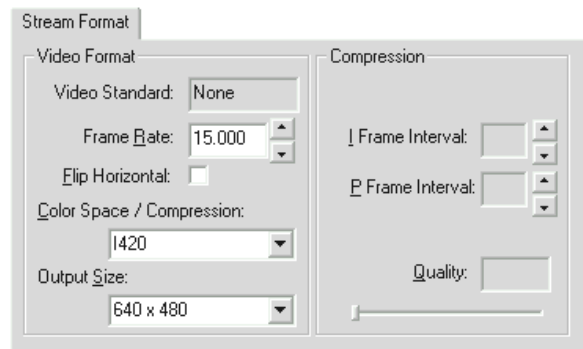
Here you can reactivate the default driver settings.

Capture Pin

Here you can adjust the resolution, frame rate and color settings on your TerraCAM.

Frame Rate:

Here you can define the frame rate. The maximum frame rate at a resolution of 640 * 480 pixels is 15 frames/sec.



Flip Horizontal

Here you can horizontally mirror the image.

Color Space / Compression

Here you can define the color compression on your TerraCAM.

Output Size:

Here you can define the resolution used by your TerraCAM. A maximum resolution of 640 * 480 dots is possible. However, please note that the higher the resolution, the lower the frame rate sinks.

SETTING THE TWAIN DRIVER

The TWAIN driver used with your TerraCAM USB Pro is required for recording single frames and can be used under Windows 98 and Windows 2000.

You can activate your TerraCAM just like a scanner from within your graphics program. The dialog window shown below is then displayed.

The film strips at the top of the dialog window displays the pictures which have already been taken. Several pictures can be “taken” at once. You can choose the best one later and then load it in the appropriate application. To do this, simply click on the required picture in the film strip. This is then shown in the window on the right next to “Live View”.

Live View

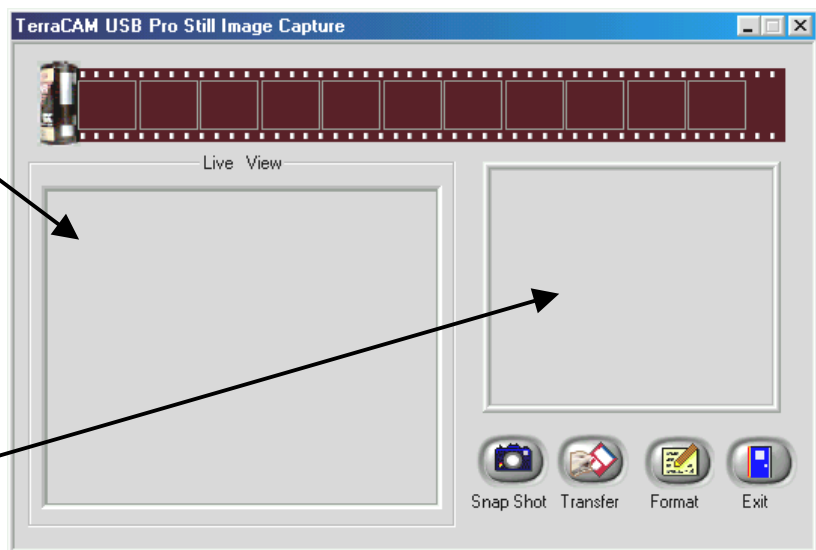
The live image of the TerraCAM USB Pro is shown here.

Snap Shot

Here you can take a snap shot.

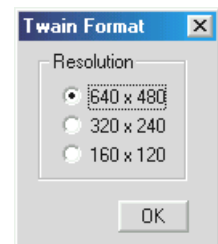
Transfer

With this function you can transfer the image shown on the right next to “Live View” to your application.



Format

When you click on Format, the dialog window shown here opens. Here you can select the resolution to be used for your pictures. Confirm your selection by clicking on OK.



Exit

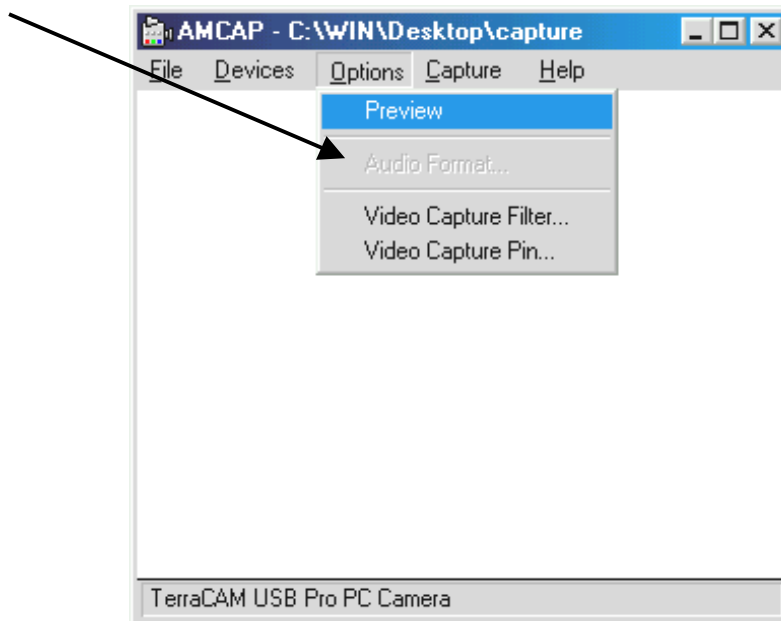
Click here to close the dialog window.

USING THE SNAPSHOT BUTTON TO RECORD SINGLE FRAMES

You can capture single frames using the Snapshot button on your TerraCAM USB Pro. This functions in the same way under both Windows 98 and Windows 2000.

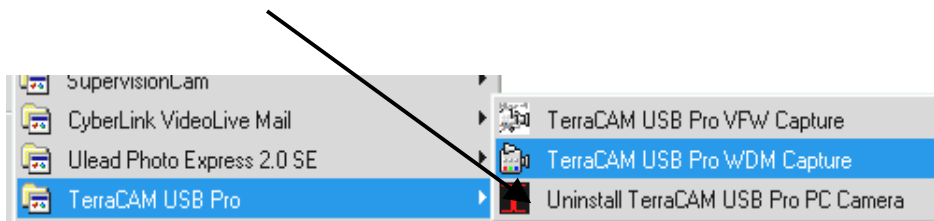
When you press the Snapshot button, the application “AMCAP” installed with the software is opened.

You only need to activate the Preview option the first time you run AMCAP.



A single frame is then recorded as soon as you press the Snapshot button. This can be saved in *.BMP format.

You can also run AMCAP manually from the “TerraCAM USB Pro” program group.



BRIEF DESCRIPTION OF THE SOFTWARE.

This is just a brief description. Please refer to the online help for detailed information on the applications.

SUPERVISIONCAM

The SupervisionCam fulfills several functions.

As a room surveillance system, SupervisionCam keeps a close eye on the field of view of your TerraCAM and reacts immediately as soon as it detects movement in front of the lens. You can have the pictures it takes sent directly by email, or SupervisionCam can automatically upload them onto your Web site.

You can also set intervals in which the TerraCAM is to take pictures. These can also be sent by email or uploaded onto a Web site.

PHOTO EXPRESS

With Photo Express you can lend your pictures that special finishing touch. Merge different pictures, make them look like oil paintings or pencil sketches, and add balloons, clouds or snow. Greeting cards or business cards, or even your very own calendar, are also simple to make using Photo Express.

Send your pictures by email, or let Photo Express create a photo page on the Internet for your Web site.

VIDEOLIVE MAIL

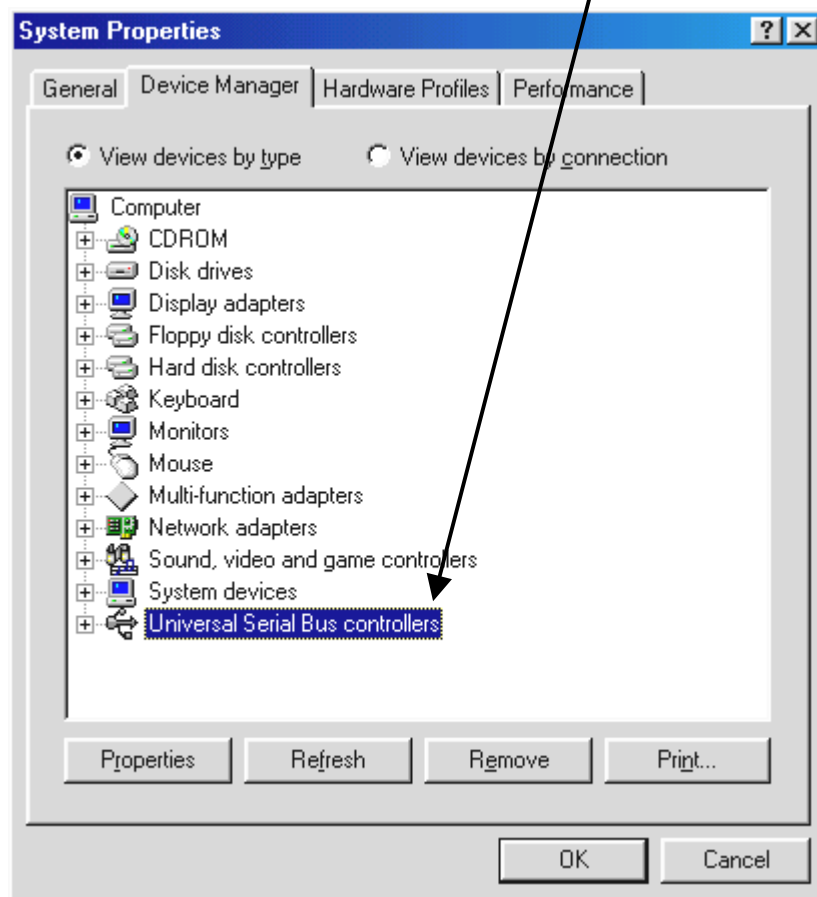
VideoMail enables you to produce short video clips, which have small file sizes despite their high quality and which can be conveniently sent by email at the click of a button.

Since Live VideoMail can also create self-playing videos, the person who receives the email does not even need any special video software to play them back.

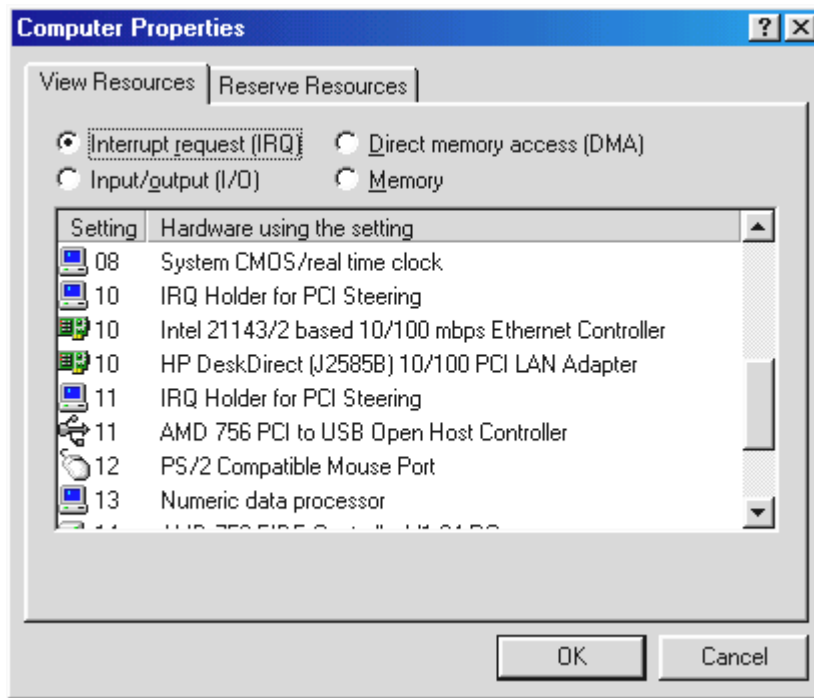
IMPORTANT SYSTEM SETTINGS FOR THE TERRACAM USB PRO.

Please observe the following instructions...

1. The USB port must be enabled in your system's BIOS and thus must also be shown in the Device Manager. If you have any questions about enabling the USB port, please check the manual of your mainboard.



2. If your system crashes after installing the TerraCAM USB, first make sure that the interrupt (IRQ) of the USB port is not also being used by another component. Although Windows will not indicate any problems in the Device Manager, problems may occur nevertheless when using the TerraCAM USB. The following screenshot shows the system's IRQ assignments which are displayed when you double-click on the "Computer" item in the Device Manager. Here you can check whether the interrupt used by the USB port is also occupied by another component.



Don't let "IRQ Holder for PCI Steering" bother you. Strictly speaking, this isn't really an additional component.

3. If you would like to use Windows 95, please ensure that you are using version 4.00.950B or higher with USB Supplement 1214 (or later). If necessary, download a USB update for your Windows version from the Internet, or contact your dealer.